

The oldest parts of the church

The present church was built about 1380. The walls of the nave and chancel, the timbers supporting the roof and the walls, and the 'legs of the tower' (towards the rear of the church) date from this period. Also from this period are two stained glass windows—windows 8 and 10 on the centre pages.

The 1860 refurbishment

In 1860, an eminent church architect, Henry Woodyer, made a number of modifications and additions to the church. Whilst keeping the walls, roof and tower structure intact, the features added by Woodyer can still be seen today:

- External walls refaced with ironstone cobbles
- Seven new windows made by Hardmans of Birmingham, dated 1860 (see centre pages)
- A wooden spiral staircase at the rear, to access the belfry tower
- New Bath Stone window surrounds
- An Entrance porch on the south side, and a vestry to the north
- Space was designated for an organ, which was installed later in 1912
- Candle sconces above the pews were added
- The octagonal pulpit and the cover over the 18th century marble font
- The ornate Altar Screen representing the Tree of Life decorated in gilt.

Nairn & Pevsner (1971) and Blatch (1997) refer to St Mary's Buckland as 'one of Woodyer's best achievements' and 'Victorian church building at its best'.

The Bells and the Altar Screen



In 1538, St Mary's had 3 bells. Now we have 6 bells, cast in the period 1860-1900. In 2005, they were extracted for re-tuning, pictured here in the aisle of the church.



The Altar Screen, known as a Reredos, represents the 'Tree of Life'. It is decorated in gilt (gold leaf) on a blue background, dating from 1860

St Mary the Virgin, Buckland, Surrey

A brief guide for visitors



St. Mary the Virgin is Buckland's church, overlooking the village green. Our Parish is twinned with St Michael's Church in neighbouring Betchworth, with whom we share a Rector. Sunday Services are held at Buckland on alternative weeks (in other weeks there is a service at Betchworth).

Our church has a group of active bellringers, a joint choir with Betchworth and a special 'Iona-style' service of quiet worship, usually on the second Sunday of the month. We operate within the Church of England's Diocese of Southwark, the Area of Croydon and the Deanery of Reigate.

Buckland was recorded with a church at the time of the Domesday book in 1086. However, the church of that time is now understood to be from a different site, about a half-mile to the north at the foot of the North Downs escarpment on Rectory Lane (close to Glebe House, the site of the old Parsonage).

The Angel (Light box), 1860



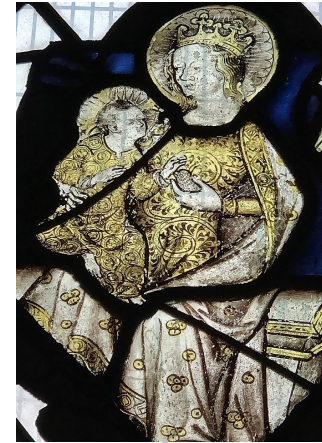
St Peter & St Paul, 1380



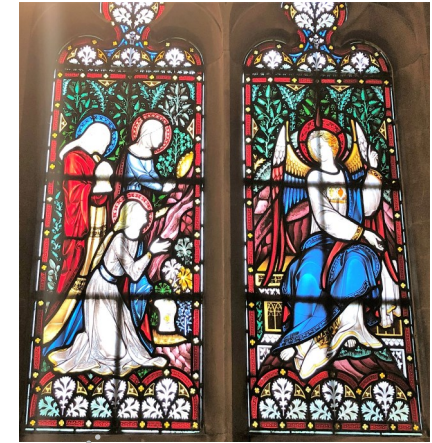
Martha anointing Jesus feet, 1860



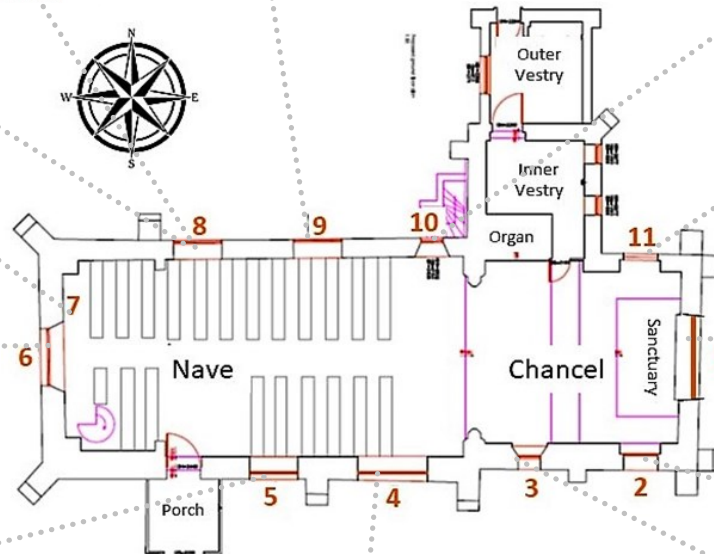
Virgin & Child, 1380



Women at tomb of Jesus, 1860



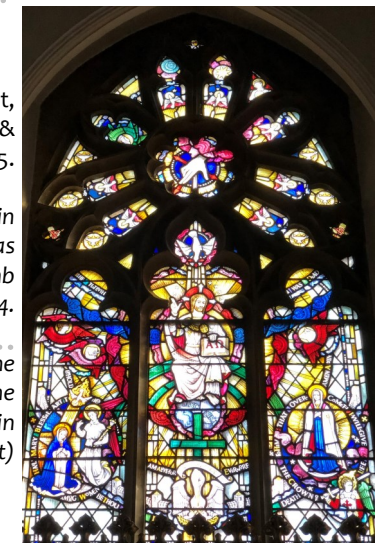
ST. PETER AND ST. PAUL, BUCKLAND; LATE 14th CENTURY



The Ascended Christ,
The Hand of God &
Dove, 1945.

The 1860 window in
this position was
destroyed by a bomb
blast in 1944.

The central part of the
1860 window is The
Angel, now restored in
window 7 (top left)



St Matthew (Man)
St Mark (Lion)
St Luke (Ox)
St John (Eagle), 1860



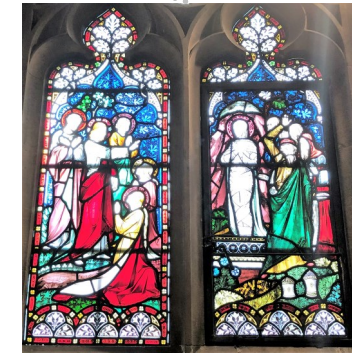
Baby Jesus presented to Simeon, 1860



Jesus birth: Nativity scene, 1860



Monk & Knight, 1933



Raising of Lazarus, 1860